

2016 Becker County Aquatic Invasive Species Program Report

This document outlines Becker County's efforts to prevent the establishment and spread of aquatic invasive species using county AIS prevention aid funds per MN Statute 477A. 19. Becker Soil and Water Conservation District worked to prevent the introduction and spread of AIS in Becker County by implementing the plan elements outlined below. Funds were carried over from 2015 to begin the 2016 season. 2016 funds received in September and December funded most 2016 activities. See **Appendix A** for a detailed financial report.

Element	Activities	2016 Expense
1. Outreach and Education	Newspaper Ads, Print Materials, Tax Insert, Television Ads, Radio Ads, Indoor Ads, Meetings	\$17,750
2. Level 1 and 2 Inspectors and Supplies	Watercraft Inspectors, Field Supplies	\$227,450
3. Decontamination	Equipment, Fuel, Truck, Maintenance, Field Supplies, Storage	\$22,666
4. Monitoring/Rapid Response/Treatment	Treatments and Monitoring Supplies	\$1,907
5. Professional and Technical Services	Coordinator, Office Space, Cell Data, Vehicle Maintenance, Fuel, Training, Web Design	\$60,529
6. Operations and Liability	Insurance, Office Supplies	\$3,846
Administration	Program Oversight/Planning	\$8,250
Total		\$342,398



Outreach and Education

In 2016, Becker SWCD promoted AIS prevention practices to a wide audience using printed handouts, a website, a tax insert, radio and television ads, indoor ads, and public presentations. Waterfront resorts were contacted and offered printed handouts and an AIS monitoring handbook. 36 resorts were contacted in 2016, and 13 requested print materials for their guests. Discussions with these businesses generated several ideas for future prevention activities at local resorts. The following list describes each outreach project completed.

- 2,500 “Inspection and Cleaning Guidebooks”
- 1,000 “Dear Boater” rack cards
- 1,000 “Help Protect MN Waters” brochures
- 200 “Stop Aquatic Hitchhikers” bobbers
- 6 month full-page ad in the “Summer Scene” magazine
- 20 AIS identification handbooks were produced in collaboration with Beltrami, Cass, Clearwater, Douglas, and Polk Counties. These waterproof books feature high resolution images of invasive plants and animals, along with native species that are often mistaken for AIS. The books were used by inspectors to identify aquatic plants at public access sites, and to identify plants that were transported by boaters.
- 100 “Early Detection Handbooks” were printed using a high quality template produced by the Minnehaha Creek Watershed District. These books describe Minnesota’s most significant AIS threats, and explain procedures for AIS monitoring, identification and reporting. They were distributed to resort owners and other lakeshore property owners.
- Restroom Ads were purchased at Zorbaz, The Holiday Inn, Long Bridge, and Pit 611, which are popular summer destinations. This 6 month campaign generated an estimated 360,000 total impressions. Becker SWCD staff produced the humorous “Clean your Johnson” ad in 2016, and received a great deal of positive feedback on this project.
- A 30 second television commercial was developed in March 2016. This commercial aired 39 times from May to August. It was broadcast on Fox Sports North during the “Linders Angling Buzz” program, as well as on the Linder Media YouTube Channel. 30 counties shared the cost of this sponsorship. The video content was produced by the Linder Media Productions team in Baxter, MN. The messaging was developed to follow community-based social marketing techniques with substantial input from UM Sea-Grant and the DNR.
- A 4 month radio campaign provided 8,856 announcements on 8 regional stations.
- AIS prevention information was included on a tax insert that was mailed out with Becker County property tax statements.

Educational Presentations

Becker SWCD provided presentations to community organizations, classrooms, and public officials in 2016. In late summer, a group of citizens representing the City of Detroit Lakes, Pelican River Watershed District, Lake Detroiters, and Becker COLA asked Becker SWCD to host a public meeting to discuss local AIS concerns. On October 24, a public forum was held at a local community college. Moriya Rufer of RMB labs in Detroit Lakes discussed the changes she has observed following Zebra Mussel infestations in other lakes, and what might be expected in Detroit Lake. DNR AIS Specialist Nicole Kovar discussed Starry Stonewort. Her presentation detailed recent efforts to manage Starry Stonewort at Turtle Lake in Beltrami County. Becker SWCD AIS Coordinator Karl Koenig provided a review of the 2016 AIS program, and ideas for the future. The event was attended by around 40 individuals, including county, city, and township officials. Newspaper coverage of the event was detailed and positive, which further broadcast the information presented. Other Becker County AIS presentations are listed below.

Youth-Specific AIS Presentations

- 5th grade conservation tour
- High School Career Day
- 5th grade classroom presentations (approx. 150 students)
- 9th grade classroom presentations (approx. 200 students)

Other AIS Presentations and Community Events

- Detroit Lakes Public Works meeting (4/11)
- Detroit Lakes City Council meeting (4/12)
- Detroit Lakes Breakfast Rotary (5/10)
- Lake Association Meetings (Little Toad-(6/12), Long Lake-(6/25), Floyd Shores and Ida-(6/11)
- Becker County Fair Booth (7/27-30)

Watercraft Inspection

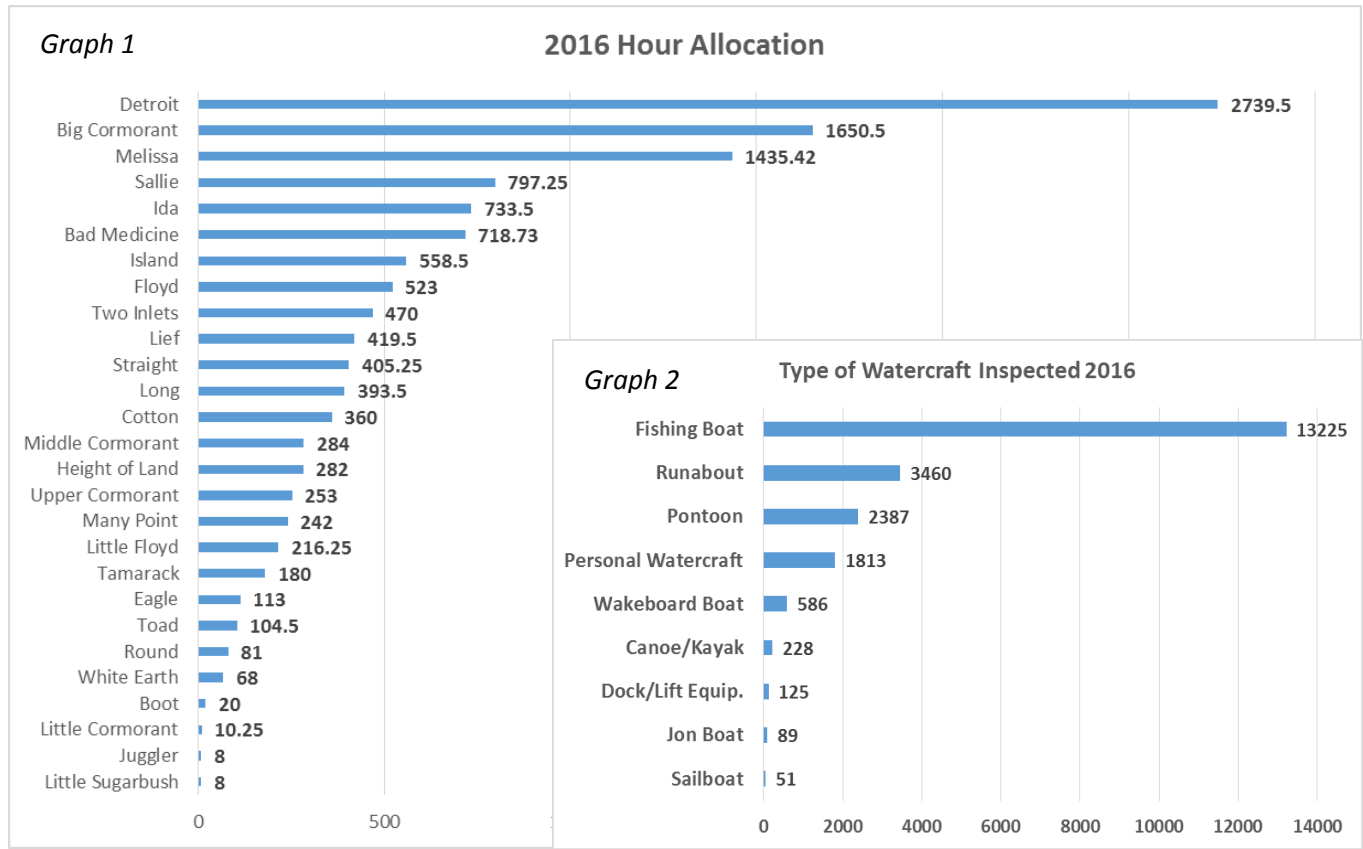
Watercraft inspections by county staff or volunteers provide an effective way to contain AIS and prevent new infestations. Becker SWCD entered a delegation agreement with the DNR again in 2016. This agreement provides legal authority to inspect watercraft and deny launch to boaters who are transporting AIS or who refuse inspection. 33 inspectors were hired in 2016. Six of the inspectors were hired to operate mobile decontamination equipment. These individuals were responsible for providing watercraft decontamination services and watercraft inspections. 27 inspectors received Level 1 training only. Additional training was provided to Level 2 inspectors on the safe and effective use of mobile watercraft decontamination equipment. Inspection services were also provided for two Mahnomens County lakes. A seasonal watercraft inspection liaison was hired to provide ongoing training and supervision.

Watercraft inspectors identified Zebra Mussels on watercraft attempting to enter Two Inlets and Upper Cormorant lakes in 2016. Curly-leaf pondweed was also removed from a boat anchor prior to the watercraft entering a lake not known to be infested with this species. In addition to preventing these potential infestations, watercraft inspectors provided boaters with print materials and demonstrated effective AIS prevention practices.



Watercraft inspection hours were allocated to individual lakes by calculating a risk score based on the number of access ramps, resorts, and the number of inspections per hour completed in 2015. Adjustments were made from the original allocations to reach as many boaters as possible with available staff, and to accommodate the requests of fishing tournament organizers. Contributions from lake associations and townships allowed for additional inspection hours at several lakes. Also, a grant provided matching funds for 250 additional hours at Detroit Lake, which were completed by DNR interns. See **Appendix D** for proposed 2017 inspection hour allocations.

- A total of 13,074 inspection hours were completed in 2016 at 29 public accesses and 1 resort. (Graph 1)
- 21,960 inspections were completed. Fishing boats were the most common type of watercraft inspected. (Graph 2)
- Watercraft inspections began on May 14th and concluded on October 30th.
- 61% of inspections were of watercraft entering an access (13,350), and 39% were of exiting watercraft (8,589).
- 21 courtesy inspections were also completed.
- Inspectors reported 249 watercraft arriving w/ plugs installed. (2.16% of watercraft equipped with a plug)
- Inspectors reported 248 watercraft arriving with plants, water, or mud. (1.86%)
- In 2015, approximately 941 boaters reported that they were coming from infested waters. (8.65% of entering watercraft) In 2016, 2,081 boaters reported coming from infested waters (15.59% of entering watercraft).



- The following table shows the number and percentage of boaters arriving at Becker County lakes not known to be infested with Zebra Mussels who report that they were last on Zebra Mussel-infested waters in Minnesota. See **Appendix B** for a breakdown of the last reported location from all 2016 entering inspections.

Highlights include:

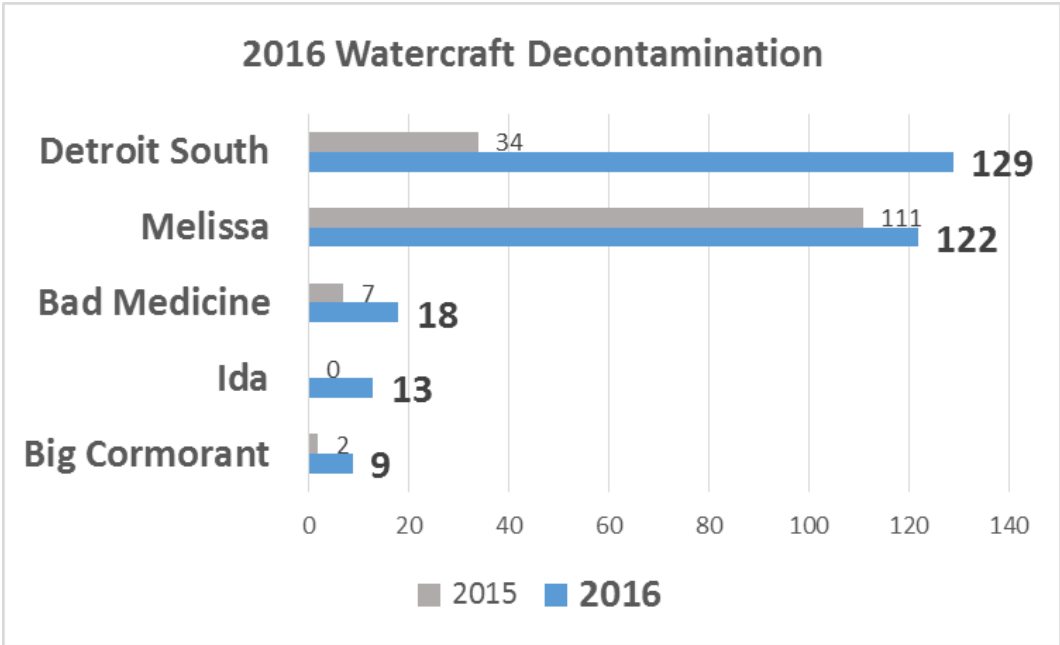
- 1,837 boaters report they were last on Zebra Mussel infested waters. (13.76%)
- 273 boaters report they were last on Eurasian Milfoil infested waters. (2.04%)
- 143 boaters report they were last on Spiny Waterflea infested waters. (1.07%)
- 29 boaters report they were last on Starry Stonewort infested waters. (.22%)
- For details on the number of hours, inspections per hour, and inspection results for each lake, see **Appendix C**.
- For Proposed 2017 Inspection Hour Allocations, see **Appendix D**.

Lake	# of Entering Inspections	# of watercraft entering from ZM infested waters	% of watercraft entering from ZM infested waters
Floyd	671	93	13.86%
Bad Medicine	672	89	13.24%
Long	363	76	20.94%
Lief	544	75	13.79%
Upper Cormorant	426	69	16.20%
Cotton	498	68	13.65%
Middle Cormorant	402	65	16.17%
Two Inlets	411	41	9.96%
Height of Land	298	29	9.73%
Many Point	145	25	17.24%
Island	258	24	9.30%
Straight	464	24	5.17%
Tamarack	224	23	10.27%
Little Floyd	159	15	9.43%
Toad	87	8	9.20%
Eagle	87	8	9.20%
Little Cormorant	9	6	66.66%
White Earth	88	5	5.68%
Little Sugarbush	4	1	25%
Round	37	1	2.70%
Juggler	1	0	0.00%
Boot	2	0	0.00%
Total	5850	745	12.74%

Table 1.

Watercraft Decontamination

In 2016, Level 2 inspectors recorded 291 watercraft decontaminations. At Detroit Lake, two Level 2 inspectors were scheduled together due to the traffic volume and size of that access site. DNR interns working there under a grant agreement allowed the scheduling of 1 level 2 inspector on certain dates. In 2015, 3,638.5 hours were billed at the Level 2 rate. In 2016, there were 2,827 hours billed at the Level 2 rate. Several factors contributed to the greater number of decontaminations completed in fewer billed hours. Except at Detroit Lake, Level 2 inspectors were scheduled alone or with Level 1 inspectors, depending on the day and access. There were 4 decontamination units operating in 2016. The Hydroblaster decontamination unit that was not used in 2015 was used at Detroit Lake. Other factors that may have increased reported decontaminations include; greater numbers of infested waters statewide, improved promotion, and more accurate data collection. Big Cormorant was scheduled to have 150 decontamination hours in 2016. Due to complaints regarding the space taken up by the decontamination equipment, only 29.5 hours were completed there in 2016.



Monitoring

Three methods were used to detect undocumented AIS infestations in 2016. Zebra Mussel veliger sampling was used on Pickerel Lake. Although the results were negative, DNR staff searched Pickerel Lake in 2016 and found an adult Zebra Mussel. Veliger sampling was used on 7 lakes in 2015. All tests were negative, yet 5 of those lakes are now known to be infested with Zebra Mussels. Due to the limitations associated with that sampling method, monitoring devices, dock and lift searches and aquatic plant sampling was used in 2016.

Zebra Mussel monitoring devices were installed on 12 lakes by lake associations and Becker SWCD staff. (Table 2) Although no Zebra Mussels were detected during periodic checks over the summer, Detroit Lake and Lake Sallie were found to have populations of Zebra Mussels in late summer 2016. This sampling method also has limitations, but it can be effective. A watercraft inspector found Zebra Mussels on a sampling device installed at Lake Sallie by the Pelican River Watershed District in September 2016. This sampling method can also be a good way to involve the public with AIS management efforts. Fall dock and lift searches are another effective way to identify unknown populations of Zebra Mussels. In 2016, 50 pieces of equipment were inspected on 24 lakes. (Table 3) No Zebra Mussels or other AIS were found.

The discovery of Starry Stonewort in nine MN lakes since 2015 underscores the need to develop an effective AIS monitoring program in Becker County. This species has caused significant problems in other locations. If AIS can be detected relatively soon after introduction, attempts can be made to control the infestation. Watercraft inspection data from 2015 and 2016 indicates that 61 boaters report last using their watercraft in lakes known to be infested with Starry Stonewort. This species has often been discovered at public access sites, making these areas a good place to conduct monitoring. In September 2016, public accesses were selected for monitoring based on 2015 and 2016 inspection data showing incoming traffic from lakes known to have Starry Stonewort. Monitoring was conducted by tossing a double-sided rake near the public access areas of the lakes listed in table 4. No undocumented AIS were found.

Zebra Mussel Monitoring Devices
Detroit
Floyd
Bad Medicine
Sallie
Buffalo
Island
Many Point
Straight
Shell
Round
Height of Land
Big Sugarbush

Table 2.

Fall Dock and Lift Search	Island	Toad
Boyer	Height of Land	Eagle
Turtle	Two Inlets	Town
Upper Cormorant	Cotton	Sauer
Middle Cormorant	Floyd	Meadow
Pearl	Straight	Lief
Little Cormorant	Bad Medicine	Buffalo
Long	Little Floyd	
Little Sugarbush	Rock	

Table 3.

Aquatic Plant Sampling	Island
Bad Medicine	Long
Big Cormorant	Many Point
Cotton	Melissa
Detroit (South, NE, NW accesses)	Sallie
Floyd	Straight
Height of Land (South access)	Two Inlets
Ida	Upper Cormorant

Table 4.

Appendix A1 – Budget vs. Actual Expense

Element	Activities	2016 Budget	2016 Actual	Notes
1. Outreach and Education	Print Materials and various outreach items	\$17,500	\$17,850	
2. Inspections	Watercraft Inspectors, Field Supplies	\$229,840	\$231,506	\$7,400 was spent to provide inspection services for Mahnomon County, which was reimbursed on 11/21/16. \$5,734 in unspent inspection funds will be applied to lakes that contributed sponsorship funds in 2016.
3. Decontamination	Equipment, Fuel, Truck, Maintenance, Field Supplies, Storage	\$13,800	\$23,091	\$13,426 was spent on a Truck for Decontamination
4. Monitoring/Treatment/Response	Treatment and Monitoring Supplies	\$10,000	\$1,619	\$8,381 reserved for future treatment efforts
5. Professional and Technical Services	Coordinator, Office Space, Cell Data, Vehicle Maintenance, Fuel, Training, Web Design	\$35,872	\$62,440	As of 12/21, \$25,002 in county funds were used to offset coordinator position costs. \$32,176 in CAISP funds supported the coordinator position in 2016
6. Operations and Liability	Insurance, Office Supplies	\$2,650	\$3,846	Insurance costs increased
7. Administration		\$9,710	\$8,061	
Total		\$318,952	\$348,413	

Appendix A2- Monthly Income and Expense Report

Income	16-Jan	16-Feb	16-Mar	16-Apr	16-May	16-Jun	16-Jul	16-Aug	16-Sep	16-Oct	16-Nov	16-Dec	Total
CAISP Aid									158,939			158,939	317,878
Lake Association Contribution				1,500	10,000	7,500		1,744					20,744
DNR Inspection Grant													
DNR Public Awareness Grant													
2015 CAISP Carry-Over*	86,910												86,910
Misc. Income											7,400	416	7816
Total Income	86,910	0	0	1,500	10,000	7,500	0	1,744	158,939	0	7,400	159,355	433,348
Expense													Total
Education/Outreach	200		1,513	546	1,051	3,297	3,321	2,710	1,292	1,691	1,629	600	17,850
Inspections and Supplies	2,312			285	4,109	372	179	124,285		79,655	15,304	5,006	231,506
Decontamination	480	13,849	411	1,108	1,520	1,031	690	1,153	718	732	499	900	23,091
Monitoring, Treatment					249			1,000		354	16		1,619
Professional and Technical**	3,750	3,214	5,020	4,957	4,950	6,501	7,982	5,202	4,910	4,471	4,573	6,911	62,440
Operations & Liability	2,970			1		840	34						3,846
Administration	629	628	387	918	964	827	443	1,549	323	586	396	411	8,061
Total Expense	10,342	17,691	7,330	7,816	12,842	12,867	12,649	135,899	7,243	87,489	22,416	13,828	348,413
													84,935

*In 2015, Becker County inadvertently charged half of the coordinator position costs against CAISP funds. This was alleviated and disbursed from Becker County's general fund in December of 2015. The adjustment, combined with remaining CAISP funds allowed Becker SWCD to carry \$86,910 in AIS prevention funds forward into 2016, not \$65,431 as reported in 2015.

** Professional and Technical Services Dec. Cost was estimated

Appendix B1- Last reported launch of watercraft 2016

	ZM*	ZM, EWM	ZM, EWM, SWF**	EWM	SWF	SSW	ZM, SSW	EWM, ZM, Bighead and Silver Carp***
Big Cormorant	286	20	6	5	26	0	3	1
Detroit	294	32	5	26	27	1	5	5
Melissa	176	8	0	7	3	0	0	1
Bad Medicine	71	10	5	11	12	3	2	1
Cotton	64	2	0	1	6	0	0	2
Sallie	164	11	2	4	13	2	0	0
Floyd	84	6	1	5	4	1	1	1
Ida	80	1	0	1	1	0	0	0
Long	67	0	0	3	5	0	1	0
Little Floyd	15	0	0	0	0	0	0	0
Island	24	0	0	0	2	0	0	0
Straight	16	6	0	8	3	0	1	1
Height of Land	24	4	0	1	3	3	0	1
Two Inlets	28	10	0	25	3	1	0	3
Middle Cormorant	63	2	0	0	0	0	0	0
Upper Cormorant	69	0	0	0	4	2	0	0
Tamarack	17	3	2	0	2	0	1	0
Lief	71	4	0	1	1	0	0	0
Many Point	17	7	0	5	5	0	1	0
White Earth	4	1	0	2	1	0	0	0
Toad	7	1	0	2	0	1	0	0
Eagle	8	0	0	1	0	0	0	0
Little Cormorant	6	0	0	0	0	0	0	0
Little Sugarbush	1	0	0	0	0	0	0	0
Juggler	0	0	0	0	0	0	0	0
Boot	0	0	0	0	1	0	0	0
Round	1	0	0	0	0	0	0	0
Total	1657*	128	21**	108	122	14	15	16***

*Inspectors at Big Cormorant, Detroit, Bad Medicine, Tamarack, Sallie, Floyd, Straight, Two Inlets and Middle Cormorant recorded 17 entering watercraft from the Mississippi River, which has a variety of invasive species. For this analysis, these visits were recorded as ZM, as Zebra

**Inspectors at Big Cormorant, Detroit, Bad Medicine and Tamarack recorded 8 visits from Lake Superior, which has a variety of invasive species. For this analysis, these visits were recorded as ZM, EWM, SWF, as these species are all found in Lake Superior.

***Inspectors at Big Cormorant, Detroit, Bad Medicine, Cotton, Straight, and Two Inlets recorded 10 entering watercraft from the St. Croix River, which has multiple invasive species. For this analysis, these visits were recorded as EWM, ZM, Bighead and Silver Carp, as these species have been found there in low numbers. The nearest reproducing populations of these carp species is assumed to be in southern Iowa

ZM = Zebra Mussel

EWM = Eurasian Milfoil

SWF = Spiny waterflea

SSW= Starry Stonewort

Appendix B2- all other responses

	Out of State	Same Lake	Blanks	Not on Survey List	Lake Service Provider	Not on infested waters list	Dock/Lift	Unknown	Storage	Prefers not to answer
Big Cormorant	85	1222	1	1	4	293	22	122	81	6
Detroit	43	1596	4	1	13	361	14	251	8	0
Melissa	16	569	0	0	8	122	8	81	0	0
Bad Medicine	11	234	1	1	1	260	2	46	0	1
Cotton	0	249	1	0	0	117	3	53	0	0
Sallie	24	569	0	0	0	168	8	14	137	0
Floyd	0	418	0	0	0	109	9	32	0	0
Ida	9	317	0	0	7	57	5	37	0	0
Long	10	213	0	0	0	41	0	22	0	1
Little Floyd	0	120	0	0	0	23	1	0	0	0
Island	6	106	0	0	0	104	0	16	0	0
Straight	20	265	0	0	1	121	4	16	0	2
Height of Land	9	124	0	0	0	109	0	20	0	0
Two Inlets	30	160	0	0	4	125	0	17	0	5
Middle Cormorant	10	244	0	0	0	74	3	6	0	0
Upper Cormorant	22	216	0	0	0	92	1	20	0	0
Tamarack	1	85	0	0	0	72	0	41	0	0
Lief	15	330	0	0	0	77	0	40	0	5
Many Point	0	44	0	5	0	60	0	1	0	0
White Earth	0	61	0	0	0	12	0	7	0	0
Toad	0	38	0	0	0	25	1	12	0	0
Eagle	0	45	0	0	0	22	1	10	0	0
Little Cormorant	0	3	0	0	0	0	0	0	0	0
Little Sugarbush	0	2	0	0	0	1	0	0	0	0
Juggler	0	0	0	0	0	1	0	0	0	0
Boot	0	0	0	0	0	1	0	0	0	0
Round	0	23	0	3	0	7	1	2	0	0
Total	311	7253	7	11	38	2454	83	866	226	20

Appendix C- 2016 Inspection Results

Lake	Billed Hours	Inspections Per Hour**	Total Inspections	Entering	Exiting	Courtesy	Plug In %	Plug In #	Plants/Mud/Water on Arrival %	Plants/Mud/Water on Arrival #	Entering from Infested waters	Entering from Out of State
Big Cormorant	1650.5	2.24	3696	2184	1509	3	1.28%	28	1.56%	34	345 (15.79%)	85 (3.89%)
Detroit	2739.5*	1.9	4137	2686	1446	5	3.72%	100	0.71%	19	392 (14.59%)	43 (1.6%)
Melissa	1435.42	1.89	1747	999	743	5	0.20%	2	0.10%	1	195 (19.51%)	16 (1.6%)
Bad Medicine	718.73	1.76	1268	672	596	0	2.97%	20	6.25%	42	114 (16.96%)	11 (1.63%)
Cotton	360	2.1	758	498	260	0	1.60%	8	1.20%	6	745 (15.06%)	0 (0%)
Sallie	797.25	2.58	2053	1116	935	2	1.43%	16	0.99%	11	196 (17.56%)	24 (2.15%)
Floyd	523	1.51	789	671	117	1	0.15%	1	0.00%	0	103 (15.35%)	0 (0%)
Ida	733.5	1.53	804	515	288	1	0.77%	4	0.58%	3	83 (16.12%)	9 (1.74%)
Long	393.5	1.49	585	363	222	0	4.13%	15	0.00%	0	76 (20.94%)	10 (2.75%)
Little Floyd	216.25	1.14	246	159	87	0	0%	0	0.00%	0	15 (9.43%)	0%
Island	558.5	0.92	514	258	254	2	1.16%	3	1.55%	4	26 (10.08%)	6 (2.32%)
Straight	405.25	2.05	831	464	367	0	3.88%	18	4.52%	21	35 (7.54%)	20 (4.31%)
Height of Land	282	1.75	493	298	194	1	1.01%	3	3.02%	9	36 (12.08%)	9 (3.02%)
Two Inlets	470	1.22	575	411	164	0	1.95%	8	4.62%	19	70 (17.03%)	30 (7.30%)
Middle Cormorant	284	2.11	599	402	196	1	0.50%	2	2.49%	10	65 (16.17%)	10 (2.48%)
Upper Cormorant	253	2.77	701	426	275	0	1.64%	7	14.08%	60	75 (17.60%)	22 (5.16%)
Tamarack	180	2.39	430	224	206	0	0.45%	1	0.00%	0	25 (11.16%)	1 (.45%)
Lief	419.5	2.19	918	544	374	0	0.74%	4	0.91%	5	77 (14.15%)	15 (2.75%)
Many Point	242	1.05	255	145	110	0	2.07%	3	1.37%	2	35 (24.14%)	0.00%
White Earth	68	2.01	137	88	49	0	0.00%	0	1.14%	1	8 (9.09%)	0.00%
Toad	104.5	1.86	194	87	107	0	0.00%	0	0.00%	0	11 (12.64%)	0.00%
Eagle	113	1.14	129	87	42	0	0.00%	0	1.15%	1	9 (10.34%)	0.00%
Little Cormorant	10.25	2.63	27	9	18	0	0.00%	0	0.00%	0	6 (66.67%)	0.00%
Little Sugarbush	8	1.63	13	4	9	0	0.00%	0	0.00%	0	1 (25%)	0.00%
Juggler	8	0.13	1	1	0	0	0.00%	0	0.00%	0	0.00%	0.00%
Boot	20	0.2	4	2	2	0	0.00%	0	0.00%	0	1 50%	0.00%
Round	81	0.69	56	37	19	0	16.22%	6	0.00%	0	1 2.78%	0.00%
Totals	13074.65		21,960	13350	8589	21	2.16%***	249	1.86%	248	2075 15.54%	311 (2.32%)
Corrected Hours**	11269.27	1.95**										
Inspections Per Hour	1.95**											
* 255 Hours from DNR Inspection Grant (\$2,040)												
** To calculate the number of inspections per hour, total hours are corrected for occasions when 2 inspectors are working together.												
***2.16% of watercraft equipped with drain plugs arrived with the plug installed												
1839 entering watercraft or equipment not equipped with a drain plug (docks, pontoons, canoes, etc.)												

Appendix D- Proposed Hour Allocations for 2017

This table shows proposed hour allocations for the 2017 inspection season. Actual hours completed are subject to change based on boat traffic, weather, and staff availability. Contributions from lake associations and townships will be applied at a rate of 14.00 per hour. Hours will be applied as directed by the sponsor, and unspent funds will be carried over to 2018. Unspent 2016 inspection funds totaling \$5,734 will be divided among 2016 program sponsors based on the individual lake's portion of the total amount of 2016 sponsorships.

Lake	PWA's (max 2)	# of resorts (max 3)	2016 Insp. per Hour	2016 Risk Score	Level	Base Hours 2017	Decon Hours	Notes
Big Cormorant	2	3	2.24	7.24	5	1000		252 Hours Carry-Over
Detroit	2	3	1.9	6.9	5	1300	1200	3 accesses, Z.M Infested +300
Melissa	1	1	1.89	3.89	3	500	900	Z.M Infested, Upstream Lake +250 70 hours carry-over
Bad Medicine	1	3	1.76	5.76	4	500	450	285 Hours Carry-Over
Cotton	1	0	2.1	3.1	3	500		Upstream Lake +250
Sallie	1	0	2.58	3.58	5	500		High Use, Upstream Lake +250
Floyd	1	0	1.51	2.51	2	500		Upstream Lake +350
Ida	1	1	1.53	3.53	3	400		ZM Infested +150
Long	1	2	1.49	4.49	3	450		20% Incoming Boats from Infested Waters +200 (29 hours Carry-Over)
Little Floyd	1	1	1.14	3.14	3	250		
Island	1	3	0.92	4.92	3	400		Upstream Lake +150 (37 Hours Carry-Over)
Straight	1	3	2.05	6.05	4	500		
Height of Land	2	0	1.75	3.75	3		450	Possible Central Decon Site
Two Inlets	1	3	1.22	5.22	4	500		
Middle Cormorant	1	1	2.11	4.11	3	400		High Use (>2 I.P.H) +150
Upper Cormorant	1	1	2.77	4.77	3	400		High Use (>2 I.P.H) +150
Tamarack	2	0	2.39	4.39	3	250		Volunteer Coverage will supplement hours
Lief	1	2	2.19	5.19	5	500		
Many Point	1	1	1.05	3.05	3	350		24% Incoming Boats from Infested Waters +100
White Earth	1	2	2.01	5.01	4	250		Mostly Fri and Sat traffic (-250)
Toad	1	2	1.86	4.86	3	250		
Eagle	1	2	1.14	4.14	3	250		
Little Cormorant	1	0	2.63	3.63	3	250		
Little Sugarbush	1	3	1.63	5.63	4	250		Low Traffic (-250)
Boot	1	2	0.2	3.2	3	150		Remote location (-100)
Flex*						510		
						11,110	3,000	
Estimated cost based on pay rate of 17.46 (inspectors) and 18.84 (decon)						\$193,980	\$56,520	
500 Flex hours reserved for Level 1 and 2 Lakes, special events, and busy weekends								

Risk Score = # of Public Accesses + # of Resorts + 2016 Inspections per hour

Adjustments made based on access use and incoming traffic from infested waters

Allocations may be adjusted to accommodate changes in boat traffic, AIS infestation, or other factors such as access closure, etc.

Appendix E- Ideas and Budget for 2017

In 2017, AIS prevention activities will continue current program elements, with ongoing evaluation to achieve the best possible outcomes. The following ideas represent key points gathered from informal public input and program evaluation. To accomplish new tasks and improve all program elements, a local citizen's advisory group will be formed in 2017. This group will meet regularly and work to improve local AIS prevention efforts.

1. Outreach and Education

- Seek additional opportunities to host, attend and present to community meetings
- Provide AIS-related training opportunities for citizens and business owners
- Continue to explore effective media strategies, individually or with other counties and organizations
- Utilize websites and social media to broadcast AIS information
- Continue and expand work with resorts (signage, training, etc.)

2. Inspections

- Improve the quality of inspections and data collection through training and supervision
- Increase the number inspection hours and inspections completed (Appendix D)
- Increase the training related to AIS monitoring and utilize inspectors for monitoring at accesses
- Expand volunteer inspection efforts on days and times when paid inspectors are not present

3. Decontamination

- Position decontamination equipment strategically across the county, in visible locations that can be easily accessed by visitors to multiple lakes
- Enhance training related to safety, customer service, and the latest AIS information
- Improve promotion and encourage boaters to make use of this service

4. Monitoring/Treatment/Rapid Response

- Prepare response plans specific to the 9 agencies that have administrative authority over the 95 public water accesses in Becker County
- Following appropriate training and project design, conduct AIS monitoring at strategic dates and locations
- Attend and promote UM Extension's AIS Detectors training program
- Expand training for inspectors to enable them to conduct basic monitoring at accesses
- Reserve 10% of 2017 County AIS Aid funds for future treatment or rapid response needs

Appendix E2- 2017 Proposed Budget

Revenue	2017 BUDGET	2017 TOTALS	2016 BUDGET	2016 TOTALS
MN State AIS Prevention Aid	\$ 349,327		\$ 317,878	
County Contribution	\$ 16,755			
*Lake Association/LGU Inspector Match			\$ 1,500	
MN DNR Inspection Grant	\$ -		\$ -	
MN DNR Public Awareness Grant	\$ -		\$ -	
Fund Carry over	\$ 86,911		\$ 87,000	
Total Revenue		\$ 452,993		\$ 406,378
Expense				
OUTREACH				
Newspaper, Radio, Summer Guide	\$ 6,000		\$ 6,000	
Printed Materials	\$ 1,000		\$ 5,000	
Tax Insert	\$ 1,500		\$ 1,500	
Signage / Updates	\$ 2,000		\$ 5,000	
Sub Total		\$ 10,500		\$ 17,500
INSPECTIONS				
Level 1 Inspectors	\$ 193,981		\$ 168,489	
Level 2 Inspectors	\$ 56,520		\$ 49,926	
Inspection Liason	\$ 8,925		\$ 8,925	
Field Supplies	\$ 2,500		\$ 2,500	
Sub Total		\$ 261,926		\$ 229,840
DECONTAMINATION				
Unit	\$ -		\$ -	
Fuel (Gas/Oil)	\$ 3,500		\$ 4,500	
Vehicle			\$ 14,000	
Maintenance	\$ 2,500		\$ 2,500	
Field Supplies	\$ 800		\$ 800	
Utilities	\$ 1,500			
Shop / Storage Fees	\$ 6,600		\$ 6,000	
Sub Total		\$ 14,900		\$ 27,800
Monitoring and Rapid Response				
Technical Services / Rapid Response	\$ 34,932		\$ 10,000	
Sub Total		\$ 34,932		\$ 10,000
PROFESSIONAL/TECHNICIAL				
Coordinator - Permanent	\$ 50,266		\$ 32,176	
Tech/Phone/Cell Data	\$ 1,500		\$ 1,500	
Office Space	\$ 3,447		\$ 2,196	
Sub Total		\$ 55,213		\$ 35,872
Operations				
Liability Insurance	\$ 3,800		\$ 2,500	
Office Supplies	\$ 150		\$ 150	
Sub Total		\$ 3,950		\$ 2,650
Total Expense	\$ 381,421			\$ 323,662
Program Administration (3%)	\$ 11,443			\$ 9,710
Total 2017 Program Budget	\$ 392,863			\$ 333,372